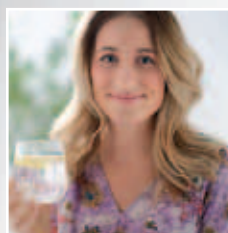


# Zip HydroTap<sup>®</sup> at work.

Boiling and chilled filtered water, instantly. *Sparkling, too!*







## Simpler.

Zip HydroTap now offers you the option of sparkling chilled filtered water as well as boiling and chilled filtered water – instantly.

---

### Boiling

Boiling filtered water, instantly, for tea, coffee, soup and cooking.

No more time wasted waiting for water to boil. Zip HydroTap makes it all so efficient!

### Chilled

Crystal-clear, great-tasting chilled filtered drinking water, always on tap.

No money wasted on bottled water. No time off the job hunting for water.

### Sparkling

Sparkling chilled filtered water at a fraction of the cost of bottled water.

So refreshing! Adds life to juices, cordials, spirits and wines.

# Safer.

Far safer to use than any kettle, Zip HydroTap puts you in total control of your kitchen safety.

---

**A unique safety lock** eliminates the risk of accidental discharge of boiling water. You need to press both the red lever and the “safety” button at the same time for access to boiling water.



**Press the blue lever** for chilled filtered water. The lever action tap gives you simple fingertip control for filling a glass, jug, carafe or bottle to just the right level without splashing or waste.



**Choose** a Zip HydroTap SPARKLING model and you can simply depress both levers for sparkling chilled filtered water, instantly. Great to drink on its own. Great with mixers.



**Avoid steam exposure** to your hands when filling pots with boiling water. Flick up the red lever, and boiling water runs ‘hands free’ continuously for any pre-set period of 5 to 15 seconds.



**You can limit boiling water access** whenever you wish. To make boiling water unavailable when your kitchen is unattended, it's easy to turn the boiling water isolation feature on and off.









## Healthier.

For healthier drinking, Zip HydroTap now filters your water 25 times finer. It's the world's last word in water filtration.

**New Zip 0.2-micron filters** reduce chlorine taste and odour and filter out particles more than one fifth of a micron in size – that's one five-thousandth (1/5000th) of a millimetre – twenty five times finer than commonly used 5.0 micron filters, designed to filter out both Cryptosporidium and Giardia cysts and other impurities, for crystal-clear great-tasting water and healthier drinking.

This is arguably the most advanced and most practical water filtration system available anywhere today, developed to meet our exacting specifications by the world leader in water filter technology.

**Zip 0.2-micron filter cartridges** are incorporated into the Zip HydroTap installation under the sink, or out of sight within the Zip HydroTap control cabinet installed beneath the tap.



**Zip 0.2-micron filter cartridges** are hygienically encased for fast and easy filter cartridge replacements. Cartridges are replaced every 12 months, or earlier if a high level of water usage makes it necessary.



**Look for the NSF symbol** on any water filter label. It is the only way you know for sure that your filter is tested and certified by the globally recognised NSF International organisation against the NSF/ANSI standards 42 and 53.



**Zip HydroTap “filter change light”** flashes when a filter change is due. It can be set to measure both water volume and the number of days in service, signalling whichever occurs first.



For installations where hard water is an issue we strongly recommend the use of an optional scale management filtration system from the Zip Professional Range.







## Greener.

Beyond comparison for energy efficiency, Zip HydroTap also stamps out water wastage, leading the world in sustainable technology.



### **Advanced technology cuts power consumption.**

Power-Pulse™ electronic technology controls power phasing precisely, to minimise energy consumption and power costs.



### **Enjoy more precise temperature control.**

Power-Pulse™ also regulates boiling water temperature more precisely than ever before, maintaining the set temperature within 0.2°C.



### **Automatically calculates boiling point.**

Because boiling point varies by altitude, Zip HydroTap pinpoints boiling point during installation and sets its controls accordingly.



### **Boiling water temperature is adjustable.**

During installation, boiling temperature can be varied from 99°C to 68°C if a lower temperature is preferred. Factory setting: 98°C.



### **Automatically sleeps when unused.**

After two hours of non-use, Zip HydroTap either powers down to maintain boiling water at 65°C or hibernates – powers off completely.



### **Slow-flash light signals when in hibernation mode.**

Touch the controls and the system awakens. Blue and red lights flash, then remain steady when boiling and chilled temperatures are okay.



### **Programmable 24/7 weekly timer.**

Turns the power off during periods your kitchen is not in use - during weekdays, or overnight, or during periods you are away.



### **Free Flow™ bottle-filling feature.**

The “Free Flow” feature now incorporated into all Zip HydroTap models allows you to fill bottle after bottle with filtered cold water even when the rated chilled water capacity is exceeded.



### **Cuts down water wastage, too.**

Every drop of water is dispensed at the set temperature so there is no water wasted running a tap until the temperature is right.



### **An air-cooled system, not water-cooled.**

Air-cooled systems never dump water into the drain, as water-cooled systems do. It's far more environmentally responsible.

# Smarter.

Zip HydroTap costs so little to run.  
Zip power-saving technology leads  
the world in economical operating costs.

---

Operating power without water draw-off

**Costs less than 60p per week**

Costs vary according to power supplier and usage.

Assuming a cost of 10p per kW and with sleep mode  
operating 10 hours in 24, **estimated energy cost  
is less than 8p per day**



Additional cost per cup (167ml) of boiling filtered  
water drawn off

**800 cups for £1.00**

Extra power to boil each 167 mL cup = 0.013 kWh.



Additional power cost per glass (200ml) of chilled  
filtered water drawn off

**2000 glasses for £1.20**

Extra power to chill each 200 mL glass = 0.006 kWh.



Power consumption estimates for a Zip HydroTap Compact 2 model rated at 1.7 kW are based on typical results of technical tests carried out for Zip and independently verified by the University of NSW. Assumed typical day is 14 hours operational mode, 10 hours sleep mode. Operational mode is the default setting; the system phases sufficient power to maintain set temperature in tanks. Sleep mode = the system powers down if not used for 2 hours, phases only enough energy to maintain boiling water >64°C. Test conditions = boiling water at 98°C and chilled water at between 5°C and 10°C.



# More Choices.

Which Zip HydroTap is right for your office, showroom, canteen or waiting room? Zip offers the world's most comprehensive range of boiling and chilled filtered water systems for any workplace.

---

## Zip HydroTap **COMMERCIAL MODELS**

Boiling and chilled filtered water,  
or boiling and ambient (cold),  
or boiling only, or chilled only.

**Page 14-15**



## Zip HydroTap **SPARKLING MODELS**

Boiling, chilled and sparkling filtered water.

**Page 16-17**



## Zip HydroTap **4-IN-1 MODELS**

Boiling and chilled filtered water plus hot  
and cold water – one boiling/chilled tap,  
one hot/cold mixer.

**Page 18-19**



## Zip HydroTap **3-IN-1 MODELS**

Boiling filtered water plus hot and  
cold water – one boiling water tap,  
one hot/cold mixer.

**Page 20-21**



## Zip HydroTap **ALL-IN-ONE MODELS**

Single tap gives boiling, chilled,  
hot and cold water.

**Page 22-23**



## Zip HydroTap **INDUSTRIAL MODELS**

Boiling and chilled filtered water,  
with robust vandal-resistant  
touch-buttons instead of levers.

**Page 24-25**







# Zip HydroTap **COMMERCIAL MODELS.**

The world's most popular range for offices, schools, hospitals and busy commercial locations

## Boiling and chilled filtered water, instantly.

Tap Finish	Bright Chrome	Bright Chrome	Bright Chrome
Product Code	BC120/60+	BC160/125+	BC200/175+
Boiling Cups/Hr	120	160	200
Chilled Glasses/Hr	60	125	175
Total Rating	2.3kW	2.3kW	3.4kW
Cabinet Dimensions W x D x H (mm)	385 x 380 x 348	440 x 430 x 337	500 x 465 x 395

Optional font accessory code **ZT004**



## Boiling filtered water, instantly.

Tap Finish	Bright Chrome	Bright Chrome
Order Code	B160F	B200F
Boiling Cups/Hr	160	200
Total Rating	1.5kW	1.8kW
Cabinet Dimensions W x D x H (mm)	280 x 323 x 337	310 x 340 x 393

Optional font accessory code **ZT004**



## Chilled filtered water, instantly.

Tap Finish	Bright Chrome
Order Code	C125+
Chilled Glasses/Hr	160
Total Rating	0.2kW
Cabinet Dimensions W x D x H (mm)	306 x 457 x 334

Optional font accessory code **ZT004**





.....

Simple to install at any sink.

 **Zip Free-Flow™**  
Limitless bottle filling capacity.

 **Zip Filtration**  
Now 0.2 micron.

 **Zip Power-Pulse™**  
Zip cuts power costs five ways.

Can be installed away from any sink with the optional Zip “font” accessory.

# Zip HydroTap **SPARKLING MODELS.**

Another world-first in workplace convenience, from Zip.



+



+



## Zip HydroTap **SPARKLING MODELS**

### Single undersink unit

<b>Tap Finish</b>	Bright Chrome
<b>Product Code</b>	BCS120/125+
<b>Boiling cups/hr</b>	120
<b>Chilled or sparkling glasses/hr</b>	125
<b>Total Rating</b>	2.3kW
<b>Cabinet Dimensions</b>	
W x D x H (mm)	385 x 412 x 348
<b>Optional font accessory code ZT004</b>	

### High capacity split system

<b>Tap Finish</b>	Bright Chrome	Bright Chrome
<b>Product Code</b>	BCSS160/125+	BCSS200/125+
<b>Boiling cups/hr</b>	160	200
<b>Chilled or sparkling glasses/hr</b>	125	125
<b>Total Rating</b>	2.14kW	2.64kW
<b>Dimensions</b>		
<b>Boiling W x D x H (mm)</b>	280 x 323 x 337	308 x 344 x 393
<b>Chilled W x D x H (mm)</b>	353 x 248 x 366	353 x 248 x 366
<b>Optional font accessory code ZT004</b>		



.....



Simple to install at any sink.



#### **Zip Free-Flow™**

Limitless bottle filling capacity.



#### **Zip Filtration**

Now 0.2 micron.



#### **Zip Power-Pulse™**

Zip cuts power costs five ways.



Can be installed away from any sink with the optional Zip "font" accessory.

# Zip HydroTap 4-IN-1 MODELS.

Boiling and chilled filtered water plus hot and cold water.  
Separate boiling/chilled tap and hot/cold mixer.



## Zip HydroTap 4-IN-1 MODELS

### Classic Mixer Tap

<b>Tap Finish</b>	Bright Chrome	Bright Chrome
<b>Product Code</b>	BCH160/125+	BCH200/175+
<b>Boiling cups/hr</b>	160	200
<b>Chilled glasses/hr</b>	125	175
<b>Total Rating</b>	2.3kW	2.8kW
<b>Cabinet Dimensions</b>		
W x D x H (mm)	440 x 430 x 337	500 x 465 x 395

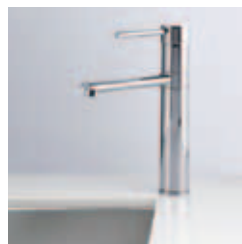
Optional font accessory code **ZT004**



### Tall Mixer Tap

<b>Tap Finish</b>	Bright Chrome	Bright Chrome
<b>Product Code</b>	BCHT160/125+	BCHT200/175+
<b>Boiling cups/hr</b>	160	200
<b>Chilled glasses/hr</b>	125	175
<b>Total Rating</b>	2.3kW	2.8kW
<b>Cabinet Dimensions</b>		
W x D x H (mm)	440 x 430 x 337	500 x 465 x 395

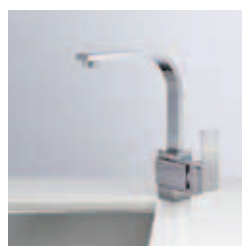
Optional font accessory code **ZT004**



### Square Mixer Tap

<b>Tap Finish</b>	Bright Chrome	Bright Chrome
<b>Product Code</b>	BCHS160/125+	BCHS200/175+
<b>Boiling cups/hr</b>	160	200
<b>Chilled glasses/hr</b>	125	175
<b>Total Rating</b>	2.3kW	2.8kW
<b>Cabinet Dimensions</b>		
W x D x H (mm)	440 x 430 x 337	500 x 465 x 395

Optional font accessory code **ZT004**





Boiling/chilled tap can be installed away from any sink with the optional Zip "font" accessory.



#### Zip Free-Flow™

Limitless bottle filling capacity.



#### Zip Filtration

Now 0.2 micron.



#### Zip Power-Pulse™

Zip cuts power costs five ways.

# Zip HydroTap 3-IN-1 MODELS.

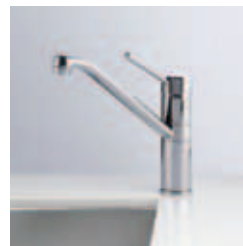
Boiling filtered water plus hot and cold water.  
Separate boiling water tap and hot/cold mixer.



## Zip HydroTap 3-IN-1 MODELS

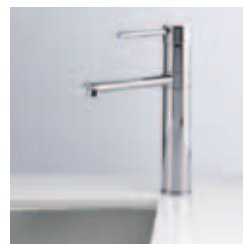
### Classic Mixer Tap

<b>Tap Finish</b>	Bright Chrome	Bright Chrome
<b>Product Code</b>	BH160F	BH200F
<b>Boiling cups/hr</b>	160	200
<b>Total Rating</b>	2.1kW	2.6kW
<b>Cabinet Dimensions</b>		
W x D x H (mm)	280 x 323 x 337	310 x 340 x 393
<b>Optional font accessory code ZT004</b>		



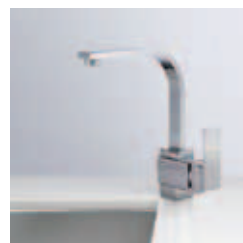
### Tall Mixer Tap

<b>Tap Finish</b>	Bright Chrome	Bright Chrome
<b>Product Code</b>	BHT160F	BHT200F
<b>Boiling cups/hr</b>	160	200
<b>Total Rating</b>	2.1kW	2.6kW
<b>Cabinet Dimensions</b>		
W x D x H (mm)	280 x 323 x 337	310 x 340 x 393
<b>Optional font accessory code ZT004</b>		



### Square Mixer Tap

<b>Tap Finish</b>	Bright Chrome	Bright Chrome
<b>Product Code</b>	BHS160F	BHS200F
<b>Boiling cups/hr</b>	160	200
<b>Total Rating</b>	2.1kW	2.6kW
<b>Cabinet Dimensions</b>		
W x D x H (mm)	280 x 323 x 337	310 x 340 x 393
<b>Optional font accessory code ZT004</b>		







Boiling tap can be installed away from any sink with the optional Zip "font" accessory.



#### Zip Free-Flow™

Limitless bottle filling capacity.



#### Zip Filtration

Now 0.2 micron.



#### Zip Power-Pulse™

Zip cuts power costs five ways.

# Zip HydroTap **ALL-IN-ONE MODELS.**

Revolutionising design of stylish kitchens.



Zip HydroTap All-In-One now makes it practical for you to plan a kitchen in which you have boiling and chilled filtered water, instantly, plus hot and cold water, all from a single tap.

You can connect a Zip HydroTap All-In-One to your mains pressure hot and cold water supply, or choose a model which mixes cold water with boiling water to give hot water, eliminating the need for connection to a separate hot water heater or separate mains pressure hot water.

## Zip HydroTap **ALL-IN-ONE-MODELS**

Tap Finish	Bright Chrome	Bright Chrome	Bright Chrome	Bright Chrome
Product Code	BC160/125+A	BC200/175+A	BC160/125+AV	BC200/175+AV
Boiling cups/hr	160	200	160	200
Chilled glasses/hr	125	175	125	175
Water input	Cold only	Cold only	Hot & cold	Hot & cold
Total Rating	2.3kW	2.8kW	2.3kW	2.8kW
Cabinet Dimensions W x D x H (mm)	440 x 430 x 337	500 x 465 x 395	440 x 430 x 337	500 x 465 x 395



**Additional energy-saving feature!**  
A light sensor on the rear of the tap shank sends the system to sleep whenever the room goes dark.



**The Zip HydroTap All-In-One**  
swivel action tap dispenses boiling, chilled, hot or cold water into either bowl of a two bowl sink.



**Zip Free-Flow™**  
Limitless bottle filling capacity.



**Zip Filtration**  
Now 0.2 micron.



**Zip Power-Pulse™**  
Zip cuts power costs five ways.

# Zip HydroTap **INDUSTRIAL MODELS.**

Top-touch models ideal for high-demand industrial sites.

Side-touch models developed specially for custodial sites.



+



## INDUSTRIAL MODELS

### Top-touch models for industrial sites

<b>Tap Finish</b>	Bright Chrome	Bright Chrome
<b>Product Code</b>	BC160/125+IT	BC200/175+IT
<b>Boiling cups/hr</b>	160	200
<b>Chilled glasses/hr</b>	125	175
<b>Total Rating</b>	2.3kW	2.8kW
<b>Cabinet Dimensions</b>		
W x D x H (mm)	440 x 430 x 337	500 x 465 x 395

### Side-touch models for custodial centres

<b>Tap Finish</b>	Bright Chrome	Bright Chrome
<b>Product Code</b>	BC160/125+IS	BC200/175+IS
<b>Boiling cups/hr</b>	160	200
<b>Chilled glasses/hr</b>	125	175
<b>Total Rating</b>	2.3kW	2.8kW
<b>Cabinet Dimensions</b>		
W x D x H (mm)	440 x 430 x 337	500 x 465 x 395





Side-touch models come complete with a high strength 25 mm tapered base which fastens to an under bench clamp block via a high strength steel spine, reinforcing the whole of the length of the tap shank. Vandal resistant. Developed specifically for the needs of custodial centres.



#### **Zip Free-Flow™**

Limitless bottle filling capacity.



#### **Zip Filtration**

Now 0.2 micron.



#### **Zip Power-Pulse™**

Zip cuts power costs five ways.

# Easy INSTALLATION.

You can install your Zip HydroTap just about anywhere.

## Location.

The tap must be positioned so that it drains into a suitable sink, or be installed on the optional "tap font kit". The tap should be situated as closely as possible to directly above the under-counter control cabinet. The maximum distance from the base of the tap to the control cabinet is one metre. The under-counter control cabinet must have top, side and rear clearances as shown on the drawings.

## Installation Requirements.

The Zip HydroTap must be installed in accordance with the installation instruction manual by a suitably competent person. All installations should be notified to Zip UK (0845 602 4533) to arrange the FREE commissioning call, where our Engineers will set up the system to meet your requirements and verify the installation meets Zip standards.

## Plumbing.

The water supply must be potable (drinkable). If static pressure exceeds 7 bar a pressure reducing valve must be fitted. An isolating valve must be installed between the water supply and the unit.

## Electrical.

The Zip HydroTap must be installed in compliance with IEE regulations and connected to a double pole switched fused spur with a minimum break capacity of 13 amp. A 3 metre power cable is provided.

## Ventilation.

For efficient operation, cupboards must be adequately ventilated. Cupboard doors should be offset using 4 mm buffers provided. With large capacity models on high demand sites, the addition of a Zip "Aire" ventilation system should be considered (order code 91287).

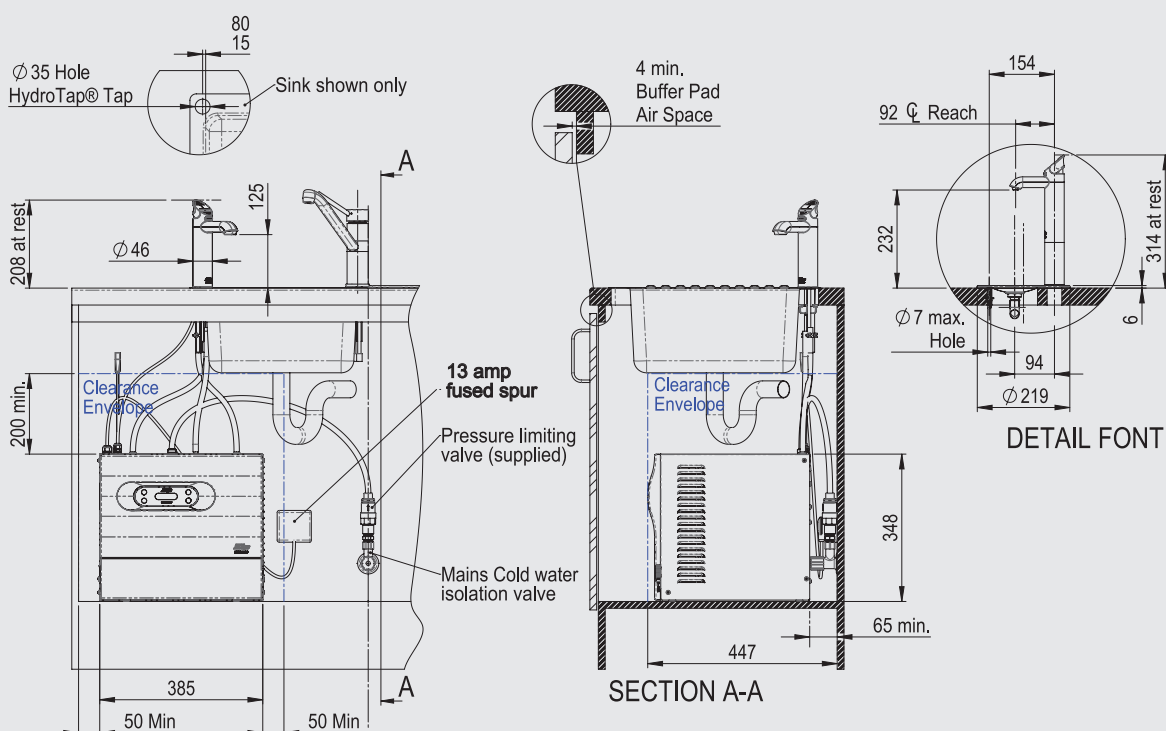
## Carbon Dioxide.

The CO<sub>2</sub> gas cylinder supplied with "sparkling" models must be secured in a suitable location using the strap provided. The gas regulator supplied must be fitted. Each cylinder contains 1 Kg of CO<sub>2</sub> and should be installed in a well ventilated area or a room of no less than 38 cubic metres. See website for gas cylinder MSDS sheet for complete list of warnings.

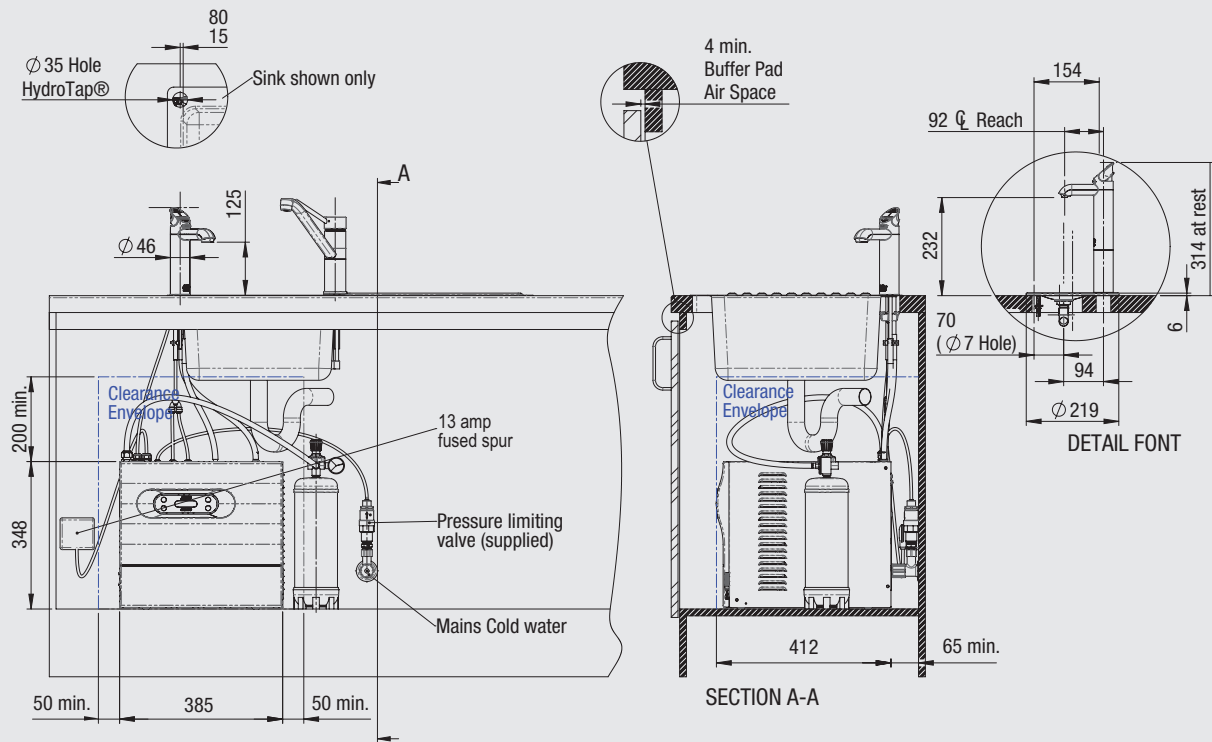
## Caution.

In some hard water areas where mineral scale accumulation can become a problem, consideration should be given to the maintenance required. A suitable form of water treatment may be necessary.

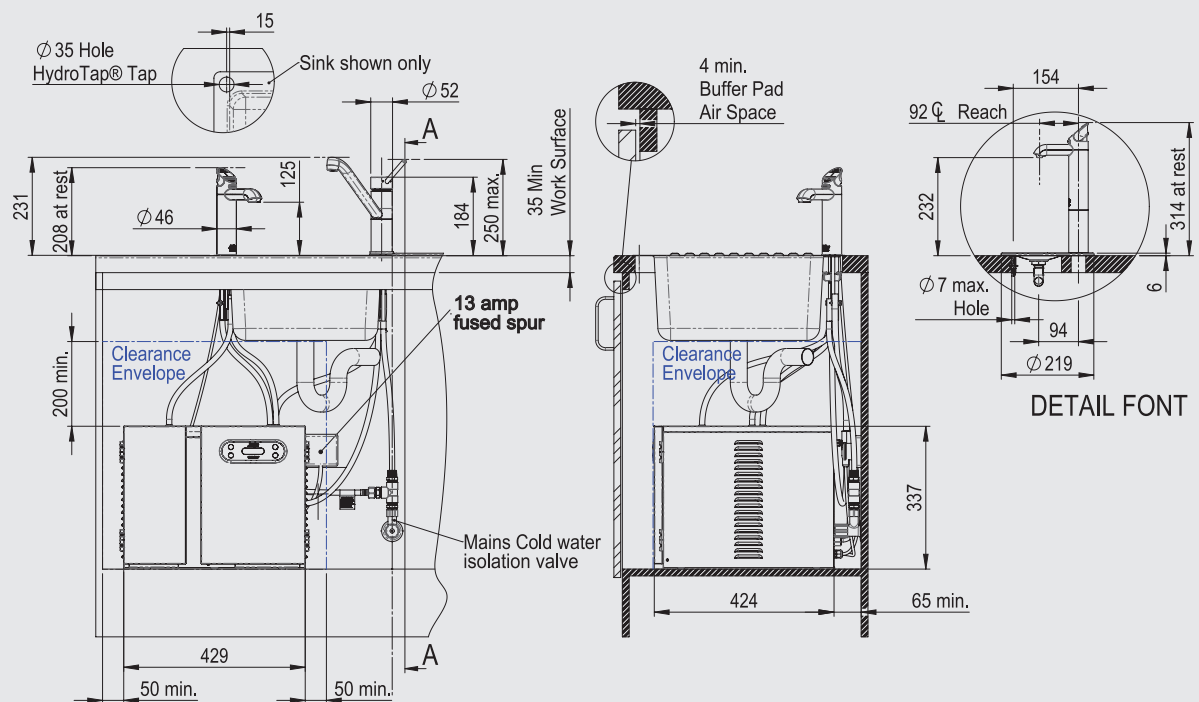
### 1. Zip HydroTap COMMERCIAL MODELS



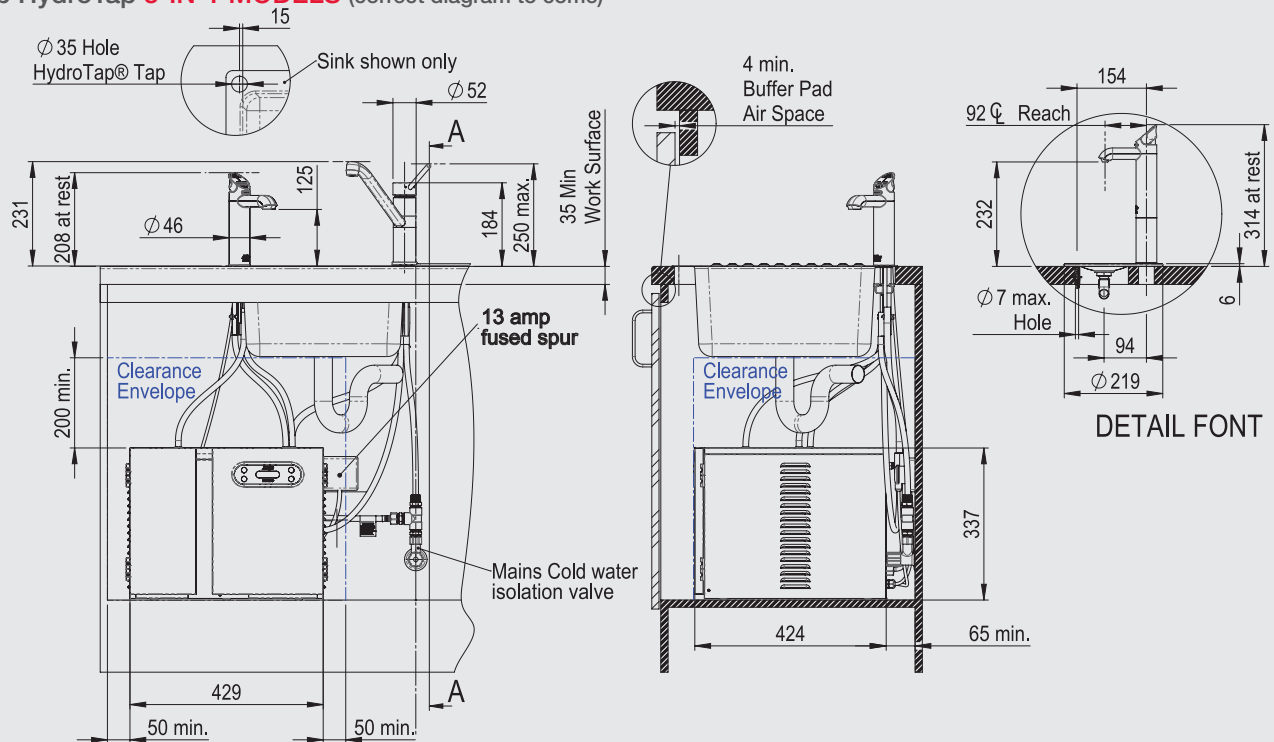
## 2. Zip HydroTap **SPARKLING MODELS**



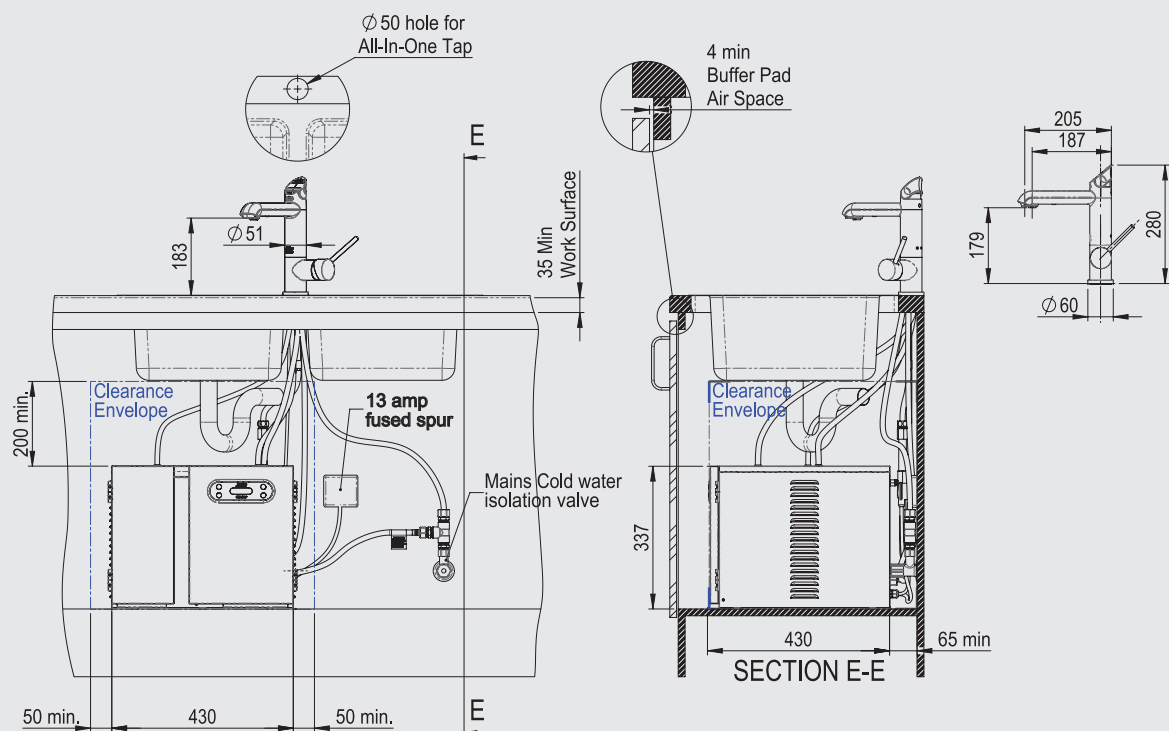
## 3. Zip HydroTap **4-IN-1 MODELS**



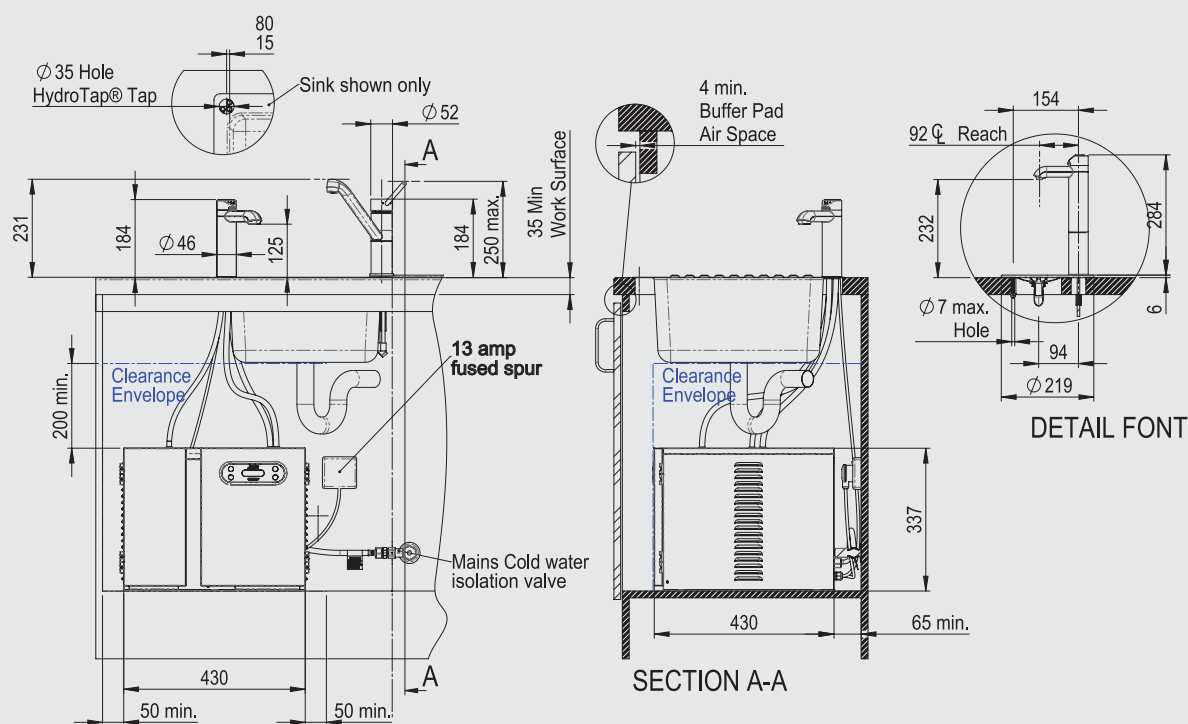
#### 4. Zip HydroTap **3-IN-1 MODELS** (correct diagram to come)



#### 5. Zip HydroTap **ALL-IN-ONE MODELS**



## 6. Zip HydroTap INDUSTRIAL MODELS



### Making life simpler for users with limited mobility or impaired vision.

When specifying a Zip HydroTap for any kitchen catering for users with limited mobility or impaired vision, you can provide for their special needs by selecting a Zip HydroTap model supplied with oversize levers fitted, and with Braille lever-covers also supplied as an accessory to be fitted to the levers on site if you wish. Oversize levers and Braille lever-covers are available for all Zip HydroTap models with the exception of Zip HydroTap All-In-One, Zip HydroTap Industrial models, or Zip HydroTap Miniboil. Braille covers are colour coded red and blue to suit models giving boiling and chilled filtered water, boiling filtered water only, or boiling and ambient (cold) water. For further details of these models, please call Zip Customer Care on 0845 602 4533.



Oversize levers



Braille lever covers





**Your choice of Zip HydroTap is so right.**

Whichever Zip HydroTap model you choose, you can be quite certain of one thing. Nobody offers you a more advanced boiling or chilled water system for your commercial project, because nobody knows instant boiling water like Zip.

Today millions of people around the world use Zip instant boiling water systems each day in homes, public buildings, hospitals, schools, offices and factories in more than sixty countries.

Zip remains world leader in instant boiling water, setting the pace in time-saving, energy-saving, water-conserving and user-safety technology.

You can be confident that the Zip HydroTap you choose today is a sound investment, because it is by far the best of its kind, designed to save you time, energy and money every day, for many years to come.

*Michael Crouch*

Michael Crouch AO  
Executive Chairman  
Zip Heaters (Aust) Pty Ltd  
A member of the Zip Industries Group



### **Extended Warranty.**

All Zip Commercial HydroTap models are covered by a 12 months full parts and labour warranty. To register, just call Zip Customer Care on 0845 602 4533. Please note that water filter life may vary according to water quality and usage. Consequently filter replacement is not covered by the terms of any Zip warranty.

### **Filter replacement.**

Zip offers you the convenience of an ongoing filter replacement service. Filter cartridges should be replaced each 12 months, or earlier if a high level of water usage makes it necessary. You can replace filter cartridges yourself, or ask for a trained Zip technician to replace them at set intervals. For filter replacement plans, call Zip Customer Care on 0845 602 4533.

### **Prompt service.**

Zip HydroTap is better designed, better built and better backed than any comparable boiling and chilled filtered water system, and is designed to give many years of service. However, like any kitchen system, it may need attention from time to time to keep it in top operating condition. To provide prompt service in any location, Zip has established a team of national, fully trained, directly employed, service engineers covering the whole of the UK – for installation, repairs or routine periodic maintenance.



# Zip HydroTap® at work.

Boiling and chilled filtered  
water, instantly. Sparkling too!

0845 602 4533  
[www.zipindustries.co.uk](http://www.zipindustries.co.uk)

## Head Office:

Zip Industries (UK) Ltd  
Bertie Ward Way  
Dereham  
Norfolk  
NR19 1TE

## London Office:

Zip Industries (UK) Ltd  
Clover House  
147-149 Farringdon Road  
Clerkenwell, London  
EC1R 3HN

## Notice.

Products shown in this brochure are protected by international patents, including patent 2005230702 and patent 2005222440. Further patents are pending. Copyright 2012 Zip Industries (Aust) Pty Ltd. Zip reserves the right to change product specifications without notice. Whilst every endeavour is made to ensure accuracy no responsibility is taken for any errors or omissions in data. The terms "Zip", "HydroTap", "Hydroboil", "Minboil", "Free-Flow" and "Power Pulse" are trade marks. ZHTR1207A3 – July 2012.

Brochure No. ZRHH/8/12

**Zip**®  
Instant Boiling Water