

# Product Guide

## Water Treatment Solutions



# Installers

**STOP**

## BWT wants to help you

If you are a professional plumber or installer and would like to know how BWT can help your business grow, check out the details below and then call us on **01494 838 161** for a full information pack.

**BWT, Europe's No.1 water technology company**, uniquely offer installers the option of joining a very different type of installer programme. Not a simple reward scheme, but a Business Partnership.

## BWT Partnership Benefits Include...

- Marketing tools to grow your business
- Dedicated technical helpline
- Product rewards
- 'Try me' own your own softener scheme
- Feedback loop directly to the managing director
- Recognition on the BWT website
- Water treatment training courses
- Welcome pack including free polo shirt

***Plus many more...***



**The Business Partner Scheme -  
supporting installers nationwide**

Call now and invest your time in a unique BWT Business Opportunity

Water Softeners	4
Physical Water Conditioners	8
Magnetic Scale Inhibitors	9
Electrolytic Scale Inhibitors	10
Electronic Water Conditioners	11
Polyphosphate Dosing Systems	11
Filtration & Drinking Water	12
Drinking Water Kits	12
Taps	13
Filtration	14
Ultra Violet Disinfection	14
Cartridges	15





## Irresistibly soft, silky, luxury water

After a busy day, imagine slipping into a hot, inviting bath or an invigorating shower and feeling the aches of the day drift away as your body is caressed by the touch of irresistibly soft, silky, luxurious water.

Step relaxed and refreshed into an opulent, soft, fluffy robe and gently dry your shiny, smooth hair and skin.

This may sound like an expensive spa treatment, but this luxurious lifestyle is easily achieved by one simple change in your home – the installation of a soft water system. Easily fitted, you'll soon start to feel the benefits. Your domestic appliances will last much longer, your kitchen and bathrooms will be easier to clean and amazingly, your clothes will take on a new found luxury and softness. Softened water uses less soap and detergents than hard water, which is not only good news for the environment, but the household budget, too. Your heating system will also be given a new lease of life as over time, softened water will help dissolve and wash away limescale that has accumulated over the years, helping to restore its efficiency.

### Did you know?

In the past, some people may have been put off soft water systems because of their perception of the cost. When in reality, today's modern BWT water softening systems are energy efficient and the costs involved are quite modest when compared to other home improvements. Any investment involved can easily be offset in years to come by the savings you make on cleaning products, longer appliance life and central heating efficiencies.



## Applications

Luxury water lifestyle enhancement & protection for:

- Central heating systems
- Modern steam ovens
- Dishwashers
- Washing machines
- Hot water heaters
- Showers

## Market Opportunities

- New kitchens
- New bathrooms
- Refurbishments
- New builds
- Replacements
- Limescale issues & damage
- Boiler and appliance protection

A water softener is a water treatment device which uses an ion exchange process to remove the minerals which are responsible for scale and scum. It leaves the user with water that is kinder to the skin, and allows soaps, shampoos and detergents to lather and rinse away more easily, saving time and money.

When choosing a water softener, a number of factors should be taken into consideration including water hardness, flow rate, daily water consumption, pressure, and system design. As a guide, when sizing a water softener, please allow 140 litres of water per person per day.

Unlike most other forms of water treatment, softened water can be stored until required without reverting back to its untreated state.

## BWT WS Series Premium Water Softeners

A concise range of technically advanced high quality, high specification, ion exchange water softeners, designed and developed for UK home and plumbing systems. Beautifully made, efficient and fully automatic, the WS range of water softeners are easy to live with. Once installed and commissioned, there is little else to do other than the occasional topping up of the unit with salt.

With smart monitoring of water usage, the water softener adapts to your lifestyle, and with five models to choose from, there is a model to suit most homes.

- Low water and salt usage = lower operating costs
- Sleek modern design = fits comfortably into most kitchen environments
- Developed for UK plumbing systems = trouble free luxury water
- Advanced electronic control system = efficient operation
- Rotary valve = reliability
- Robust construction = durability
- Easy set up = simple operation
- Five models to choose from (10 –25 litres) = system compatibility
- Building regulations Part G neutral
- Built and tested to BS EN 14743 = peace of mind



### Free @ home commissioning

Installers - Free Up Your Time

Simply install and set up a BWT branded water softener, leave it running and we will provide FREE commissioning. To register your installation or for more details, please call 01376 334 200.

Model Number	WS 355	WS 455	WS 555	WS 655	WS 755
Resin volume in litres	14	10	14	20	25
Maximum exchange capacity litres @300 ppm	2500	1666	2500	3333	4167
Flow rate min / service / peak (l/m)*	10/25/30	N/A	N/A	10/25/30	5/25/30
Flow rate min / service / peak (l/m) (High Flow)*	10/30/50	10/30/50	10/30/50	10/30/50	10/30/50
Salt used per regeneration min / max (kg)**	1.2-2.4	0.3-1.2	0.6-2.0	0.9-2.5	1.2-3.0
Water used per regeneration (litres)**	<80	<75	<80	<125	<145
Max /min pressure (Mpa / (bar))	0.5/0.17 (5.0/1.7)				
Dimensions H x D x W (mm)	602 x 480 x 270	532 x 480 x 270	602 x 480 x 270	804 x 480 x 270	804 x 480 x 270
Inlet / outlet / drain pipework size (Inches)	3/4 / 3/4 / 1/2				
Installation kit	15mm Full	22mm Full	22mm Full	15mm Full	15mm Full
Electrical supply / transformer	220V AC/12V DC				

\*Flow rates from 10 litres and up to the peak flow rate stated. At flow rates under 10 litres per minute, the hardness may not be effectively removed from the water. If peak flow rates are sustained for longer than ten minutes, the softener capacity may be reduced, resulting in hard water breakthrough. \*\*The proportional brining control system calculates the exact amount of water and salt required to regenerate the water softener. The amounts used will vary depending on the remaining capacity of the resin bed.



**Installation Notes:** The WS355, WS655 and WS755 are supplied with a 15mm fitting kit as standard. High Flow models are supplied with 15mm valve set and 22mm hoses. The WS455 and WS555 are supplied with a full 22mm kit as standard.



## BWT Prismertec Eco Water Softener

The BWT Prismertec Eco has been designed and developed with high performance as well as efficiency in mind. It is capable of delivering large amounts of softened water to demanding and busy households.

- Advanced electronic control system
- 2-way indexing head for ease of installation
- Proportional brining for greater efficiency
- 43% less waste water & 30% less salt per regeneration<sup>1</sup>
- High capacity monosphere resin
- Building regulations Part G neutral
- Built and tested to BS EN 14743

Model Number	BWTAQPRIS
Resin volume in litres	10
Maximum exchange capacity litres @300 ppm	1580
Flow rate min / service / peak (l/m)*	10/30/50
Salt used per regeneration min / max (kg)**	0.6/0.9
Water used per regeneration (litres)**	<20
Max /min pressure (Mpa / (bar))	0.5/0.15 (5/1.5)
Dimensions H x D x W (mm)	535 x 520 x 270
Inlet / outlet / drain pipework size (Inches)	3/4/3/4/1/2
Installation kit	Full 22mm
Electrical supply / transformer	220V AC/24V DC



<sup>1</sup> Comparisons calculated on published data of similar sized water softeners.

<sup>2</sup> Warranty subject to service plan and terms and conditions.

## BWT Light Commercial Water Softeners

The BWT light commercial water softeners have been designed and developed to work in commercial premises such as restaurants, guest houses and small hotels. Models are normally chosen against the need of a commercial application e.g. protecting steam ovens.

- Precision controlled proportional brining
- High flow rates
- Commercial quality valves and controllers
- High quality resin
- Robust construction
- Digital display
- Built and tested to BS EN 14743



Model Number	CASA 25PR	CASA 50PR	CASA 75PR
Resin volume in litres	10	16	20
Maximum exchange capacity litres @300 ppm	1400	2600	3600
Flow rate min / service / peak (l/m)	6/27/33	6/25/33	6/27/42
Salt used per regeneration (kg)	1.25	2.0	2.5
Water used per regeneration (litres)	55	103	128
Max /min pressure (Mpa / (bar))	0.5/0.17 (5.0/1.7)		
Dimensions H x D x W (mm)	655 x 500 x 385	1110 x 500 x 385	1110 x 500 x 385
Inlet / outlet / drain pipework size (Inches)	DN25/1"		
Installation kit	Optional		
Electrical supply / transformer	220V AC/24V DC		



## Aquadial Domestic Water Softeners

The Aquadial range of domestic water softeners have been developed to compliment today's busy lifestyles. With outputs suitable for up to 8 people, each model delivers copious amounts of softened water, tailored to meet the demands of modern living.

- Digital control system
- Data storage system
- Proportional brining
- Digital display
- Easy to programme electronic control system
- Built and tested to BS EN 14743



Model Number	SLHITEC	SLHITECHF	SLHITECMM	SLMMHF
Resin volume in litres	10	10	14	14
Maximum exchange capacity litres @300 ppm	1667	1667	2500	2500
Flow rate min / service / peak (l/m)	10/25/30	10/30/50	10/25/30	10/30/50
Salt used per regeneration min / max (kg)	0.3/1.4	0.3/1.4	0.6/2.2	0.6/2.2
Water used per regeneration (litres)	<80	<80	<90	<90
Max /min pressure (Mpa / (bar))	0.5/0.17 (5.0/1.7)			
Dimensions H x D x W (mm)	532 x 480 x 270	532 x 480 x 270	602 x 480 x 270	602 x 480 x 270
Inlet / outlet / drain pipework size (Inches)	3/4/3/4/1/2			
Installation kit	15mm Full	22mm Hoses only	15mm Full	22mm Hoses only
Electrical supply / transformer	220V AC/12V DC			

## Aquadial Prismertec High Performance Water Softener

The Aquadial Prismertec is capable of delivering large amounts of softened water to demanding and busy households, and has been designed and developed to provide a cost effective solution for households with multiple bathrooms and direct feed hot water systems.

- Proportional brining
- High capacity monosphere resin
- Power failure protection
- Digital display
- Finely tuned bed design and distributor
- Building regulations Part G neutral
- Built and tested to BS EN 14743



Model Number	PRIS2
Resin volume in litres	10
Exchange capacity litres @300 ppm	1667
Flow rate min / service / peak / (l/m)*	10/30/50
Salt used per regeneration min / max (kg)**	0.3/1.4
Water used per regeneration (litres)**	<80
Max /min pressure (Mpa / (bar))	0.5/0.17 (5.0/1.7)
Dimensions H x D x W (mm)	532 x 480 x 270
Inlet / outlet / drain pipework size (Inches)	3/4/3/4/1/2
Installation kit	Full 22mm
Electrical supply / transformer	220V AC/12V DC

\*Flow rates are from 10 litres and up to the peak flow rate stated. At flow rates under 10 litres per minute, the hardness may not be effectively removed from the water. If peak flow rates are sustained for longer than ten minutes, the softener capacity may be reduced, resulting in hard water breakthrough. \*\*The proportional brining control system calculates the exact amount of water and salt required to regenerate the water softener. The amounts used will vary depending on the remaining capacity of the resin bed.



Physical water conditioners can offer a cost effective, environmentally friendly alternative for controlling the build-up of scale where heat exchange takes place. These type of devices alter the water chemistry, are easy to install and inexpensive to run.

In general, they inhibit the formation of scale by changing its physical properties, and are ideal for protecting individual appliances at the point where water flows through them. Some will also offer full house protection. There are four main types: **Magnetic, Electrolytic, Electronic** and **Chemical Dosing**.

### Primary Purpose

To help protect and extend the life of hot water appliances such as central heating boilers, shower units, washing machines and hot water cylinders from the effects of limescale. These types of units are suitable for installers wishing to comply with Part L of the building regulations.

## Magnetic

The magnetic scale inhibitor works by encouraging the formation of larger, needle shaped crystals, as opposed to the normal small cubic pattern found in hard untreated water. This reduces the stickiness of the scale forming crystals and enables them to be washed away by the flow of the water. The effect on the water is temporary, making them ideal for the protection of individual appliances.

## Electrolytic

These types of unit add minute quantities of metal, usually zinc or iron, to suppress the formation of scale by altering the chemical equilibrium of the water. They also act as sites for scale to precipitate onto, consequently protecting vulnerable heating surfaces like heat exchangers and heating elements. Once water is conditioned by the device, any remaining limescale held in suspension simply passes through the hot water system without sticking to heat exchange surfaces.

## Electronic Devices

These units use very low power electrical energy which flows through wires which are wrapped around a pipe and encourages some of the dissolved calcium in the water to precipitate as minute seed crystals in the water itself. When the water is heated, these 'seed crystals' attract further scale to them, rather than the metal surfaces around them. The larger crystals that result are washed away in the water flow. These devices are simple to install.

## Dosing

This type of system is the most popular and effective method of treating water before it is heated in water heating units like combination boilers. The system works by sequestering the calcium in the water and prevents it from forming scale on the heat exchanger. When choosing a chemical dosing system, care must be taken to ensure it is unaffected by water volume and pressure, as overdosing can cause chemicals to stick to the heat exchanger, leading to premature failure.



**All Scale Inhibitors Installation Notes:** Please do not over tighten fitting or use a pipe wrench on body. Unit must be adequately supported on both sides of the installation and correctly aligned to avoid stress to the unit or joint. Protect from frost.



## Limefighter Compact Magnetic Scale Inhibitor

The Limefighter Compact is a professional quality magnetic scale inhibitor, designed for easy installation into new or existing installations. Their compact size and high quality finish make them ideal where space is limited and/ or the finished installation is visible to the consumer. Requiring no power supply or chemicals, the Limefighter Compact is both maintenance free and environmentally friendly.

- Compact design for easier installation
- All metal construction for durability
- High quality finish, ideal for visible installations
- Compression and push-fit models available
- Suitable for cold and hot water
- Environmentally friendly (no chemicals)
- Can be installed on horizontal or vertical pipework



Model Number	Pipe Size (mm)	Fittings	Diameter (mm)	Length (mm)	Maximum Flow Rate (l/s)	Max Pressure (Bar)	Max Water Temp (°C)
COMPRESSION FITTING							
LFC2 -15	15	Compression	35	150	0.6	10	70
LFC2 - 22	22	Compression	35	154	0.6	10	70
PUSH-FIT							
LFP2 - 15	15	Push-Fit	35	160	0.6	8	70
LFP2 22	22	Push-Fit	35	167	0.6	8	70

## Specialist Magnetic Scale Inhibitors

### Shortest

A compact scale inhibitor, designed for use on installations where linear space is limited.

- Space saving design
- Unique bowl design for maximum water contact and effect
- Suitable for new and existing installations
- Available in sizes 15 and 22mm



### CSR

An in-line magnetic scale reducer that uses powerful ceramic magnets to alter the characteristics of the scale forming minerals found in hard water, helping prevent hard scale deposits.

- Unique design allows greater contact with the water for maximum effect
- High flow rates, up to 90 litres a minute, for whole house protection
- Suitable for vertical and/or horizontal pipe work
- Compact design



Model Number	Pipe Size (mm)	Fittings	Diameter (mm)	Length (mm)	Maximum Flow Rate (l/s)	Max Pressure (Bar)	Max Water Temp (°C)
SH15	15	Compression	45	145	0.6	10	25
SH22	22	Compression	45	150	0.6	10	25
AC000900	15	Compression	90	100	1.3	10	25
A1000500	22	Compression	90	100	1.5	10	25

## Limebeater Compact Electrolytic Scale Inhibitor

The Limebeater Compact is a professional quality electrolytic scale inhibitor, designed for easy installation into new or existing installations. Their compact size and high quality finish make them ideal where space is limited and/ or the finished installation is visible to the consumer. Requiring no power supply or chemicals, the Limefighter Compact is both maintenance free and environmentally friendly.



- Compact design for easier installation
- All metal construction for durability
- High quality finish, ideal for visible installations
- Compression and push-fit models available
- Suitable for cold and hot water
- Environmentally friendly (no chemicals)
- Can be installed on horizontal or vertical pipework

Model Number	Pipe Size (mm)	Fittings	Diameter (mm)	Length (mm)	Maximum Flow Rate (l/s)	Max Pressure (Bar)	Max Water Temp (° C)
COMPRESSION FITTING							
LBC2 -15V2	15	Compression	35	150	0.6	10	70
LBC2 - 22V2	22	Compression	35	154	0.6	10	70
PUSH-FIT							
LBP2 - 15	15	Push-Fit	35	160	0.6	8	70
LBP2 22	22	Push-Fit	35	167	0.6	8	70

## Limebeater for Larger Pipe Sizes (28 - 54mm)



- All metal construction for durability
- Suitable for cold and hot water
- Environmentally friendly (no chemicals)
- Can be installed on horizontal or vertical pipework

Model Number	Pipe Size (mm)	Fittings	Diameter (mm)	Length (mm)	Maximum Flow Rate (l/s)	Max Pressure (Bar)	Max Water Temp (° C)
LBC28	28	Compression	41	256	1.08	10	70
LBC35	35	Compression	41	256	1.08	10	70
LBC42	42	Compression	67	322	1.6	10	70
LBC54	54	Compression	67	322	2.8	10	70

## Wrappa Electronic Water Conditioner

The Wrappa is a compact electronic scale conditioner that uses radio frequencies to alter the characteristics of the hardness minerals within the water, preventing them forming hard to remove scale deposits. With no pipes to cut or joints to be made, the Wrappa is easy to install and maintain.

- No need to cut the pipe or disturb any existing plumbing
- Can be installed on a variety of different pipe sizes
- Works on any pipe work material including lead and plastic
- Removes existing scale
- Can help reduce heating bills
- No maintenance required



Model Number	Pipe Size (mm)	Power Consumption (W)	Fuse Rating (A)	Dimensions L x W x H (mm)	Maximum Flow Rate (l/s)
LW2	Up to 35	3	3	150 x 100 x 45	0.80
LW10	Up to 76	5	5	221 x 157 x 87	2.50

## Combi-Care Polyphosphate Dosing System

A popular and effective method of treating water before it is heated in instantaneous water heating units like combination boilers. The Combi-Care works by introducing a very small amount of food grade polyphosphate into the water feed, sequestering the calcium in the water and preventing it from forming scale on the heat exchanger.

- Offers protection from both limescale and corrosion
- Suitable for whole house or single appliance protection
- Flow rates up to 54 litres per minute
- Easy change cartridge
- Cartridges have a 12 month life, tying in with annual service contracts
- Can also be used in soft water areas as a corrosion inhibitor.



Model Number	Pipe Size (mm)	Fittings	Width (mm)	Length (mm)	Maximum Flow Rate (l/s)	Max Pressure (Bar)	Max Water Temp (°C)
AC002100	15	Compression	120	215	0.5	10	30
AC002200	22	Compression	120	215	0.9	10	30
AC002400	Replacement cartridge suitable for both models above						

Please note: These units will be affected by hot water transfer back down the system, therefore, they should be sited as far away from the boiler as possible (minimum 1m). Do not install where ambient temperature is likely to exceed 40°C.



**All Scale Inhibitors Installation Notes:** Please do not over tighten fitting or use a pipe wrench on body.

Unit must be adequately supported on both sides of the installation and correctly aligned to avoid stress to the unit or joint. Protect from freezing.

## Filtration & Drinking Water

Filtration systems typically comprise of a filter housing and disposable or washable filter, and are intended to be incorporated within a water supply system. Drinking water systems are similar in their design, although slim-line systems often make use of filter cartridges that do not require a separate filter housing. Their compact size makes them ideal for where space is limited. Drinking water systems are usually supplied with a tap and fixing kit for easy installation.

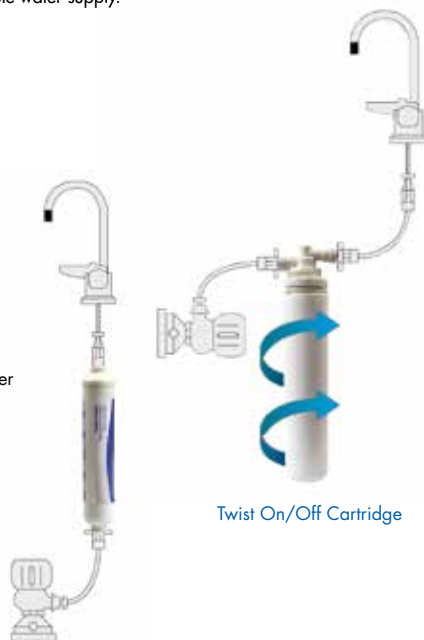
All filter assemblies should only be fitted to an approved and safe potable water supply.

Applications:

- Drinking water
- Boiler pre-treatment
- Bore hole and spring water supplies
- Food processing
- Beverage preparation

## Slim-line Drinking Water Filter Kits

- Space saving designs
- Innovative, easy to change filter cartridges
- Simple installation via push-fit couplings and food grade tubing
- Suitable for the removal of bad taste and odours from drinking water
- Range includes Touch Flow, Quarter Turn and 3-Flow taps
- Fitting kit supplied



In - line Cartridge

Twist On/Off Cartridge

Application Key:

SR	Sediment removal
P	Pesticides
TO	Taste and odour
OC	Organic chemical
S	Scale reduction
B	Bacteria
H	Heavy metal
A	Aluminium reduction
C	Cysts
LR	Lead reduction

Material Key:

\*PP Polypropylene



Cartridges should be replaced every three to six months (unless otherwise stated), depending on the quality of the incoming water and the amount of water used. Please refer to the cartridge guide for information on which cartridges to use.

All drinking water kits and water filters should be fitted with a suitable isolation valve and the pressure relieved from the system by opening a suitable tap prior to working on the filter or changing the cartridge.

3-Flow taps deliver hot, cold and filtered drinking water to the kitchen sink through one tap.

Model Number	Max Flow (l/m)	Max Temp (°C)	Max Pressure (Bar)	Type of Tap	Type of Cartridge	Application - See Key	Cartridge Supplied	Material*
TFPKIT	2	25	5	QT Long Reach	Twist on/off	SR,TO,LR,C,P	TFPCART	PP
WSTRIML	2	25	5	3-Flow	Twist on/off	SR,TO,LR,C,P	TFPCART	PP
TFKIT	2	25	5	Short Reach	In-Line	SR,TO	TFCART	PP
NFIL	2	25	5	Short Reach	In-Line	TO,OC	NCIL	PP
NRSK	2	25	5	Short Reach	In-Line	TO,S,LR,H	NSK13	PP

Important Note: Water supplies should be verified as safe to drink by competent and qualified person(s).



## Standard Drinking Water Filter Kits

- 10" standard filter housing for use with a wide range of BWT filters
- Choice of long or short reach taps
- Simple installation via push-fit couplings and food grade tubing
- Fitting kit supplied, including wall mounting bracket
- Additional and specialist filters available

Picture for illustrative purposes only

Model Number	Max Flow (l/m)	Max Temp (° C)	Max Pressure (Bar)	Type of Tap	Type of Cartridge	Application - See Key	Cartridge Supplied	Material *
CFKIT01	5	25	5	Long Reach	Standard 10"	SR,TO,OC,P	CART3	PP
AD000100	5	25	5	Short Reach	Standard 10"	TO,OC	C1	PP
NCP1	Dependent on Cartridge	25	5	Short Reach	Standard 10"	N/A	None	PP

## RLK & RBK Duplex Drinking Water Filter Kit

### RLK

- Suitable for the removal of bad tastes and odours from drinking water
- Removes the minerals that cause scale and scum
- Reduces the levels of lead and other heavy metals
- Simple installation via push-fit couplings and food grade tubing

### RBK

- The combined filters remove particulate matter down to 1 micron
- Removes cryptosporidium, giardia and many other cysts
- Can significantly reduce levels of bacteria



Note: The RBK using the filters supplied will NOT reduce scale and scum

Model Number	Max Flow (l/m)	Max Temp (° C)	Max Pressure (Bar)	Type of Tap	Type of Cartridge	Application - See Key	Cartridge Supplied	Material *
RLK	5	25	5	Short Reach	Standard 10"	S, LR, TO, H, OC	R1 & C1	PP
RBK	5	25	5	Short Reach	Standard 10"	SR, TO, OC, P, A, B, C	MX1 & CY	PP

Model Number	Finish	Height	Reach
TTC	Chrome	6"	3"
TT8	Chrome	8"	3"
TT8CC	Chrome	8"	6"
QTRTAP	Chrome	8"	6"

## Alternative and Replacement Drinking Water Taps





## NP1 & NDL2 In-Line Filter Housings

The NP1 and NDL2 are filter housings, designed for installation on cold water drinking lines.

### NP1

- Robust 10" filter housing
- Suitable for a wide range of BWT filters
- Fixing bracket supplied
- Inlet/ outlet 3/4" BSP F

### NDL2 (as above plus)

- Heavy duty filter housing with water bypass and isolation facility
- Fixing bracket available separately (SDL2)



Model Number	Max Flow (l/m)	Max Temp (° C)	Max Pressure (Bar)	Type of Tap	Type of Cartridge	Application - See Key	Cartridge Supplied	Material*
NP1	Dependent on cartridge	25	5	None	Standard 10"	N/A	None	PP
NDL2	Dependent on cartridge	25	5	None	Standard 10"	N/A	None	PP

## Ultra Violet Disinfection Units

A high grade UVPC housing that contains an Ultra Violet tube and protective quartz sleeve.

- Disinfects drinking water without using chemicals – environmentally friendly
- Eliminates contaminants such as e-coli, cysts and bacteria
- Suitable for private water supplies, holiday homes, caravans and boats, remote dwellings and small commercial premises
- Low power consumption
- Simple and safe to operate



Model Number	Inlet/outlet	Max Flow (l/m)	Dimensions H x L x D (mm)	Filter and Cartridge Supplied	
				Pre-filter	Cartridge
FP20N	3/4"	8	460 X 460 X 160	Supplied with filter housing & cartridge	
P15N	1"	8	330 X 460 X 160	NP1	NSWS
P30N	1"	19	460 X 1020 X 160	HF76	HFSW5
P55N	1"	54	460 X 1020 X 160	HF76	HFSW5

For further details of filter housings and cartridges, please ask your BWT area manager.

**Important Note:** Water supplies should be verified as safe to drink by competent and qualified person(s).



Pre-filters require changing every 3 to 6 months, and UV bulbs every 9 to 12 months, dependent on whether the unit is left on constantly or periodically switched off (NB. switching UV off will reduce lamp life). Bacteria with a kill rate higher than 30,000 uWsec/cm<sup>2</sup> (e.g. Bacillus spores) can be treated by slowing down the rate at which the water flows. Do not install where ambient temperature is likely to exceed 40°C.

## Filter Cartridges

Primarily designed to fit inside filter housings, cartridges are disposable items, used to filter out undesirable elements from drinking water. There are a variety of cartridges available within the BWT range, each capable of removing specific elements including limescale, bad taste, pesticides and particulate matter from household drinking water.

Cartridge Type	NSW 1	NSW 5	NSW 25	N-CSW	C1	NCIL	PP	R1	NSK 13	MX 1	CY	CR 10	TF-CART	TFP-CART	CART 1	CART 3
Sediment Removal	•	•	•	•						•	•		•	•	•	•
Bad Taste Chlorine Removal				•	•	•			•	•		•	•	•	•	•
Scale Remover							•	•	•			•				
Scum Remover								•	•			•				
Lead Reduction								•	•			•		•		
Aluminium removal											•					
Heavy Metal Reduction								•				•				
Bacteria (down to 1 micron)											•					
Cysts (down to 1 micron)											•			•		
Organic Chemicals				•	•	•			•	•	•	•			•	•
Pesticides										•	•			•	•	•
Above cartridges suitable for use following housing kits																
Housing NP1-10"	•	•	•	•	•		•	•		•	•	•			•	•
Housing IP2-20"	•	x2	x2	x2	x2					x2	x2	x2				
Housing NDL2	•	•	•	•	•		•	•		•	•	•			•	•
Kit NCP1	•	•	•	•	•		•	•	•	•	•	•			•	•
Kit N-FIL						•										
Kit N-RSK									•							
Kit RLK	•	•	•	•	•		•	•	•	•	•	•			•	•
Kit RBK	•	•	•	•	•		•	•	•	•	•	•			•	•
Kit WSTRITL														•		
Kit WSTRIML														•		
Kit CFKITO1	•	•	•	•	•		•	•		•	•	•			•	•
Kit TFPKIT														•		
Kit TFKIT													•			
Kit AD000100-10"	•	•	•	•	•		•	•	•	•	•	•			•	•

# BWT The Company

Best Water Technology Group (BWT) is Europe's leading water technology company. Our global water partner network comprises of the group's 2,800 employees along with thousands of plumbers, planners, architects and hygiene experts.

Using state-of-the-art methods, our Research & Development teams are constantly working on new processes and materials to create products which are both ecological and economical. Collectively, the BWT group work towards reducing products' energy consumption and the resulting minimisation of CO2 emissions for a more sustainable future.

BWT UK operate in a wide variety of different sectors, meaning that you are never far from a company or building using a BWT product. BWT helps fulfil the water treatment requirements for homes, offices, buildings, schools, industry, hospitals and catering and hospitality facilities.

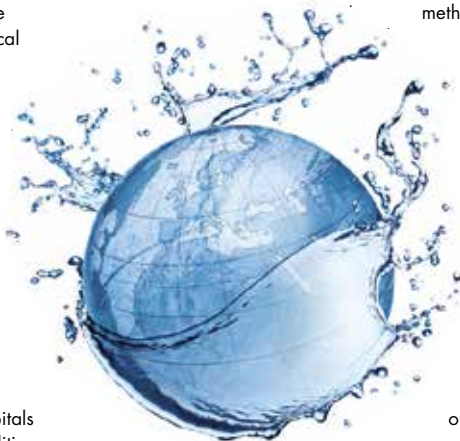
With a high build quality, BWT continue to prove their superiority in providing all your water needs, whether it is providing ultrapure water for the pharmaceutical sector, luxury water for the home or beautiful drinking water.

BWT makes products that treat water, making it safer, cleaner and more pleasant to enjoy.

BWT's wide-ranging innovations guarantee maximum safety, hygiene and health in the daily use of water – our precious elixir of life. Innovations include SEPTRON® - the world's first electrodeionisation module (EDI), manganese oxide activation (MDA) – a method for effective manganese removal, AQA total bipolar technology for chemical-free limescale protection, SANISAL – the world's first disinfectant regeneration salt for water softening systems, and the new, revolutionary Mg2+ technology which improves the taste of filtered water, coffee and tea.

## **BWT – For You and Planet Blue -**

our overall mission is to encapsulate the philosophy of working as ecologically, economically and socially responsible as possible, and providing our customers and partners with the best products, systems, technologies and services in all areas of water treatment whilst making a valuable contribution in preserving global resources of our blue planet.



## Contact

### **BWT UK Limited**

BWT House, The Gateway Centre,  
Coronation Road, High Wycombe,  
Buckinghamshire, HP12 3SU  
Tel: 01494 838 100  
Email: [sales@bwt-uk.co.uk](mailto:sales@bwt-uk.co.uk)

## Europe's No.1 in Water Technology

BWT 2013. In the interests of product development, we reserve the right to alter specifications without prior notice. All photographs and dimensions are given for guidance only. Terms and conditions apply. E&OE.

ME1339.